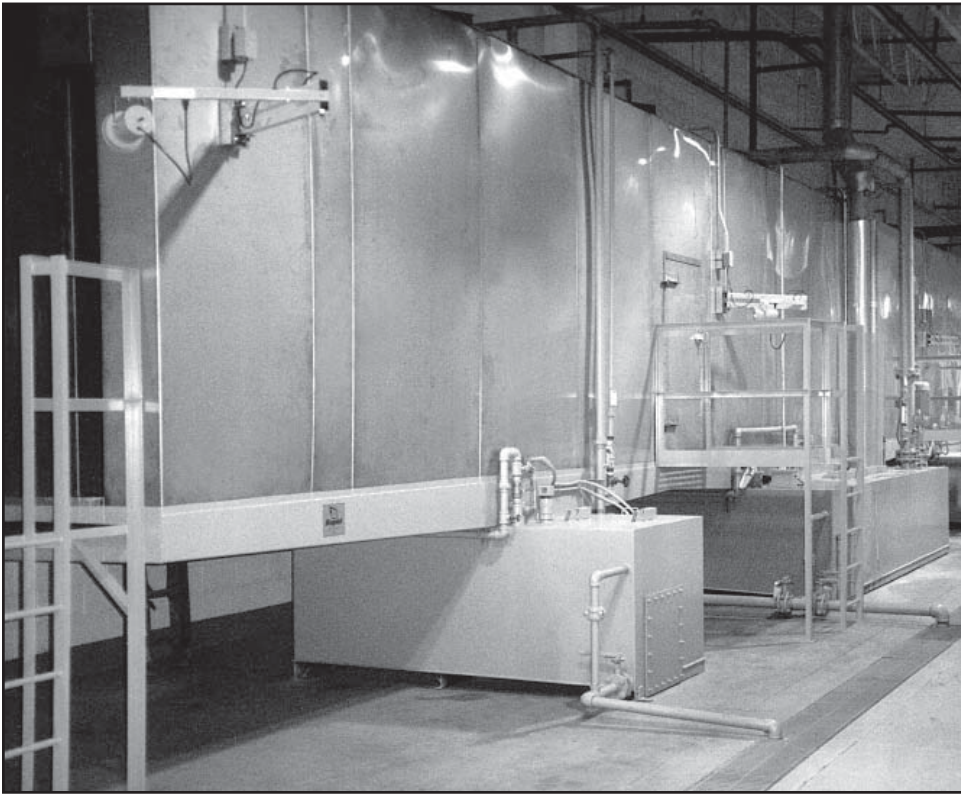


SERIES 400 Factory-Assembled Washer



Rapid's Series 400 multi-stage washers are manufactured and assembled at Rapid and then shipped to you for quick installation and use.

The Series 400 standard design comes in the following configurations:

- Mild steel: 2-stage, 3-stage or 5-stage
- Stainless steel: 2-stage, 3-stage or 5-stage

These quality washers are designed for conveyor systems operating in a range of 4 fpm to 8 fpm.

GENERAL SPECIFICATIONS

- 36" wide x 66" high product opening with 15" clearance from top of the rail to top of the part
- Product loading is up to 12,000 lbs/hr at 4 fpm
- 8' long clean/phosphate stage(s) @ 20 PSI
- 4' long rinse stage(s) @ 15 PSI
- 6' long vestibule and drain zones
- Pre-assembled and pre-wired
 - 2-stage and 3-stage washers shipped in one section
 - 5-stage washer shipped in two sections
 - Entrance/Exit exhaust fans (ship loose)
- Enamel-painted finish (mild steel washers only)

TUNNEL

- 12-gauge mild steel or 14-gauge stainless steel tunnels
- Schedule-80 CPVC headers and "U" shaped risers
- Internal tank covers

TANK AND DRAIN DECK

- 10-gauge mild steel or 10-gauge 304 stainless steel tanks and drain decks
- Haynes Barreilmount pumps with mild steel or stainless steel shaft and impellers
- Mild steel or stainless steel pump screens (one in each stage)
- Schedule-40 mild steel or Schedule-10 stainless steel burner tubes (140° F maximum)
- Eclipse "Immersojet" Burners

CONTROLS

- Factory Mutual (FM) approved manifold
- UL listed 480/3/60 Control Panel
- Honeywell UDC 1000 temperature controls
- Honeywell electronic flame controls with UV scanners



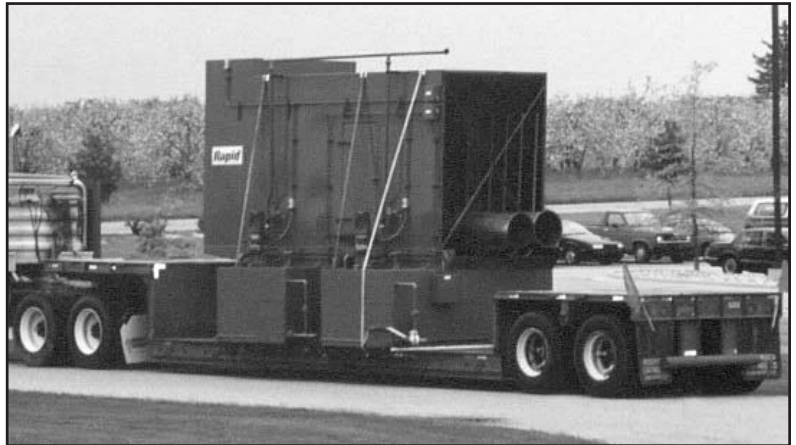
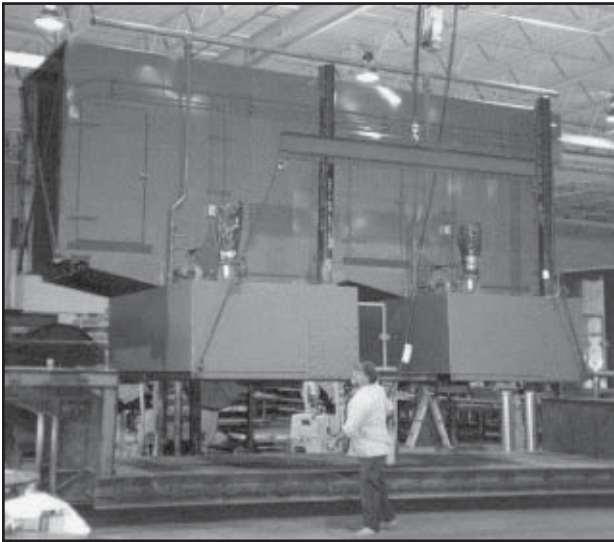
An Employee Owned Company For more information, visit us on the Web at: <http://www.rapidengineering.com>

1100 Seven Mile Rd. NW • Comstock Park, MI 49321 • Fax: (616) 647-9892

1-800-536-3461

SERIES 400 Factory-Assembled Washer

Rapid's factory-assembled washers are shipped to you for quick installation and use!



Another Series 400 washer on its way to a satisfied customer.

OPTIONS AVAILABLE

- Drain/overflow piping
- Alarm/horn in Control Panel
- Washer access platforms
- Tunnel access doors
- Fresh-water fill (manifold w/solenoid and Warrick electronic liquid-level controls)
- Tank clean-out doors
- Interior lights
- Split-top design (allows for longer hooks)
 - Brush package

THE RAPID ADVANTAGE

- All RAPID washers are constructed of the highest quality materials to extend equipment life and to ensure the maximum resistance to corrosion.
- RAPID specifies pumps, valves and gauges of the highest quality, providing optimum operating control and exceptional reliability.
- Clip-on spray nozzles allow for quick adjustment and easy maintenance.
- Compliance with FM insurance standards.

PARAMETERS:

- Clear work opening (H) 66"
- Clear work opening (W) 36"
- Hanger length 15" minimum
- Risers/Headers Schedule-80 CPVC
- Total load (product & conveyor) 6,000 to 12,000 lbs/hr
- Tunnel construction Welded panel
- Exhaust fans (2) 3,500 cfm each

	Clean & Phosphate Stage(s)	Rinse Stage(s)
• Burner BTUH – capacity	2,000,000	N/A
• Burner BTUH – operating	1,600,000	N/A
• GPM (each nozzle)	3.5	3
• Length of zone	8'	4'
• Max temperature	140	Amb
• Nozzle pressure	20 psi	15 psi
• Nozzle type	5050	5050
• Pump: hp/gpm	7.5/396	3/168
• Tank capacity - gallons	1,200	500

OVERALL DIMENSIONS

- 2-stage: 8' W x 10' H x 34' L
- 3-stage: 8' W x 10' H x 39' 8" L
- 5-stage: 8' W x 10' H x 62' 4" L



Rapid Industrial Finishing Systems
Air Management Systems

An Employee Owned Company For more information, visit us on the Web at: <http://www.rapidengineering.com>

1100 Seven Mile Rd. NW • Comstock Park, MI 49321 • Fax: (616) 647-9892

1-800-536-3461